



GAT MONTHLY MEMBERSHIP PROGRESS REPORT

Results as of: 12/31/2021

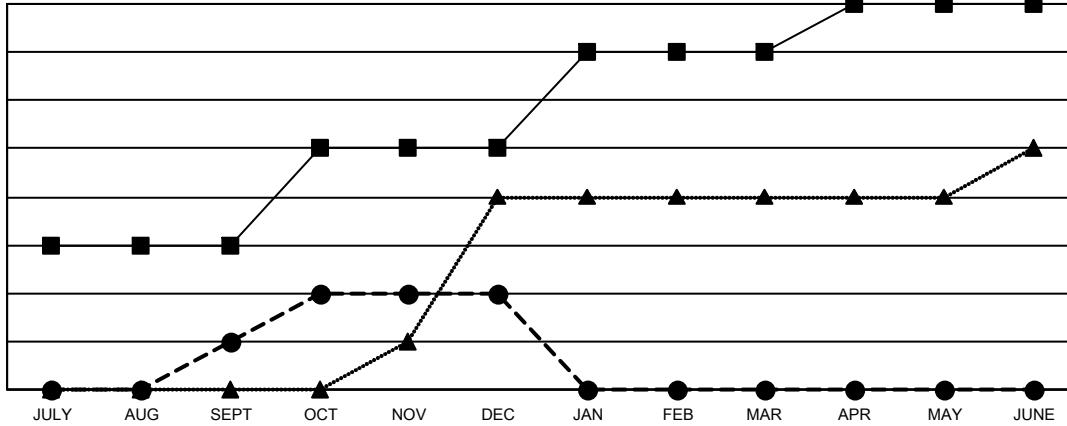
Multiple District 18

LOCATION: GEORGIA

| Clubs | | | |
|-----------------------|---------------|-----------|---------------|
| RESULTS FOR 2021-2022 | | | |
| QUARTER | NEW CLUB GOAL | NEW CLUBS | DROPPED CLUBS |
| JULY/AUG/SEPT | 3 | 1 | 3 |
| OCT/NOV/DEC | 2 | 1 | 3 |
| JAN/FEB/MAR | 2 | 0 | 0 |
| APR/MAY/JUNE | 1 | 0 | 0 |

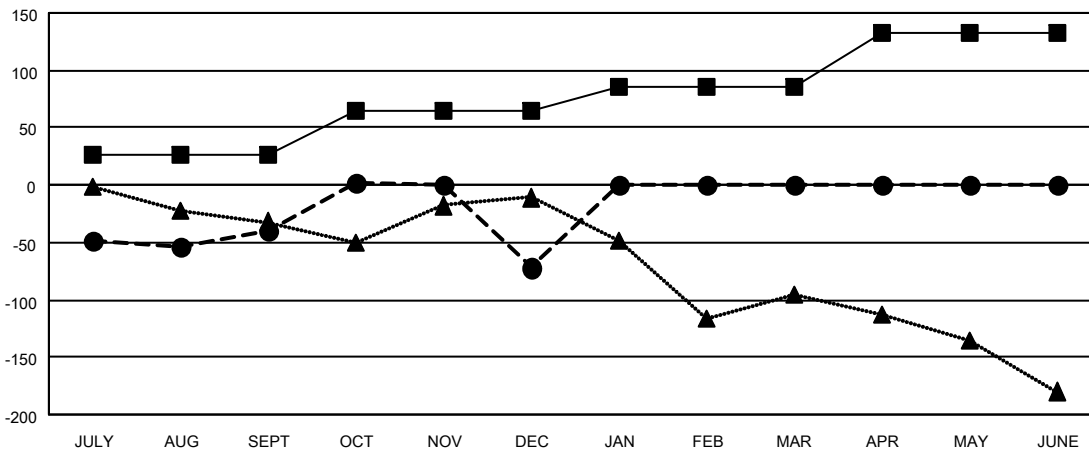
| Members | | | |
|-----------------------|------------------------|----------------------|--|
| RESULTS FOR 2021-2022 | | | |
| QUARTER | MEMBER GROWTH NET GOAL | MEMBER GROWTH ACTUAL | DROPPED MEMBERS ACTUAL (including transfers) |
| JULY/AUG/SEPT | 26 | 158 | 188 |
| OCT/NOV/DEC | 39 | 138 | 146 |
| JAN/FEB/MAR | 21 | 0 | 0 |
| APR/MAY/JUNE | 46 | 0 | 0 |

GOALS AND ACTUAL NEW CLUBS CUMULATIVE



- CURRENT YEAR GOALS FOR NEW CLUBS
- CURRENT YEAR ACTUAL NEW CLUBS
- ▲- LAST YEAR ACTUAL NEW CLUBS

GOALS AND ACTUAL MEMBERS CUMULATIVE



- MEMBER GROWTH NET GOAL
- MEMBER GROWTH ACTUAL
- ▲- LAST YEAR MEMBERSHIP ACTUAL

| | | | |
|-------------------------|---|--|----------------|
| DROPPED CLUBS: 6 | 83 CLUBS OF 203 ADDED 1 OR MORE NEW MEMBERS | GENDER DISTRIBUTION | |
| DROPPED MEMBERS | | MALE | 2,785 (63.89%) |
| DECEASED | 43 | FEMALE | 1,573 (36.09%) |
| CLUB CANCELLED | 70 | NON BINARY | 0 (0.00%) |
| OTHER | 221 | PREFER NOT TO ANSWER | 1 (0.02%) |
| TOTAL | 334 | TOTAL FAMILY UNIT MEMBERS 767 | |
| | CLICK HERE FOR CUMULATIVE MEMBERSHIP DATA | FAMILY MEMBERS PAYING HALF DUES 395 | |